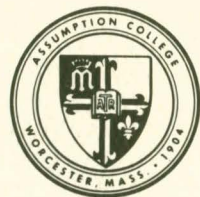


THE SIXTY-EIGHTH
COMMENCEMENT



ASSUMPTION COLLEGE

SATURDAY, MAY THE EIGHTEENTH
NINETEEN HUNDRED AND EIGHTY-FIVE

Recipients of Honorary Doctorates

William J. Bennett

William J. Bennett took the oath of office as the third U.S. Secretary of Education on February 6, 1985, following unanimous confirmation that day by the U.S. Senate.

Previously, Mr. Bennett was chairman of the National Endowment for the Humanities (NEH) since December 1981. A native of New York, he has earned degrees from Williams College, the University of Texas and the Harvard Law School. Mr. Bennett has taught law and philosophy at a number of universities and has been a consultant to more than fifty secondary schools on quality in curriculum development.

Mr. Bennett is chairman of the National Council on the Humanities, a trustee of the Smithsonian Institution's Wilson Center Fellowship Board, a member of the President's Committee on the Arts and Humanities and is an ex-officio member on numerous other boards.

Virgil Dechant

As supreme knight of the Knights of Columbus since 1977, Mr. Dechant heads the world's largest Catholic fraternal society with 1.4 million members.

In addition to his world-wide responsibilities, Mr. Dechant has sparked significant growth and change within the Knights of Columbus. He established as one of his early objectives an outreach program to widows and children of deceased members. Under his direction charitable disbursements by local and state units and the Supreme Council have more than doubled to \$53 million.

A native of Liebenthal, Kansas, Mr. Dechant maintains a residence and wheat farm in LaCrosse, Kansas, where he is also chairman of the board of a family-owned motor company.

George Krikorian

Mr. Krikorian is the founder, chairman of the board of directors and chief executive officer of Spencer Products, Inc. In his public life, he is a highly visible participant in a number of civic and professional organizations. A veteran of the Second World War, Mr. Krikorian has been involved with Worcester area business and industry for more than forty years. In addition to serving as chairman and chief executive officer of two corporations, he has used his research talents as an inventor and is the holder of seven United States patents.

He and his wife of forty-two years, Anna, have a son, George, Jr., a graduate of Assumption.

Jean Watson

Jean Watson is a professor of nursing and dean in the School of Nursing at the University of Colorado Health Sciences in Denver. Dr. Watson has earned degrees in nursing, psychiatric-mental health nursing and a Ph.D. in educational psychology and counseling. She is a widely published author and has also dedicated twenty years to research in the full spectrum of nursing. Dr. Watson was one of the early nursing educators in this country to develop nursing curricula that included content and experiences related to death and dying. Her recent work focused on human care and development of nursing as a human science. She is now considered one of the contemporary nursing theorists in the world.

His Eminence Luis Cardinal Aponte - Martinez

For Cardinal Martinez, 1985 is a year of anniversaries: his thirty-fifth year of ordination, twenty-fifth year as bishop, twentieth year as archbishop and twelfth year as cardinal. While he is noted for his years of dedication to fostering vocations to religious life, he is most widely known and loved as a man of the people. A primary focus of his priestly life has been directed toward helping the poor, meeting the various needs of the elderly and emphasizing the role of education in Puerto Rico, the land of his birth.

Cardinal Martinez, D.D., currently serves the church as Archbishop of San Juan.

Seniors Receiving Academic Honors

Mary Bennett	Religious Studies* and Psychology
Denise Desautels	Social and Rehabilitation Services
Carole Girouard	Psychology
Kimberly Hazard	French
James Heffernan	Mathematics
Elizabeth Lapman	Spanish
James Mezynski	Biology
David Morisseau	Chemistry
Joanne Pinsonneault	Sociology
Lisa Piquette	English
Kerry Plunkett	Education
Andrea Pulcini	Foreign Affairs
Sean Savage	Politics and History
Annmarie Schiavitti	Economics
William Smith	Management
William Sousa	Philosophy
Jeffrey Ugalde	Accounting
Maureen Van Hogezaand	Foreign Languages
*Emmanuel d'Alzon Award	

The following graduating students from The Center for Continuing and Professional Education were recently induced into Assumption College's chapter of Alpha Sigma Lambda, the national honor society for non-traditional students.

Susan Anderson	Bachelor of Science in Liberal Studies
Marian Cutroni	Bachelor of Science in Nursing
Helene Z. Halasz	Bachelor of Science in Liberal Studies
Lynn M. Halldin	Bachelor of Science in Liberal Studies
Elizabeth Kolak	Bachelor of Business Administration/Accounting
Joyce B. McGourty	Bachelor of Science in Liberal Studies
Lynn C. Paresky	Bachelor of Business Administration/Management
Nancy K. Sarlan	Bachelor of Science in Liberal Studies
Frances Southard	Bachelor of Science in Liberal Studies
Helen M. Szabo	Bachelor of Business Administration/Management
Teresa A. Wheeler	Bachelor of Liberal Studies

Assumption College Alma Mater

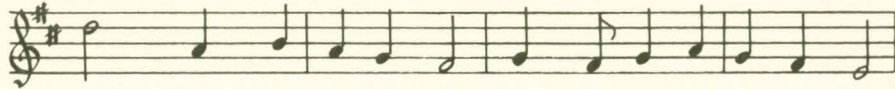
Lyrics: Beverly Shaw Johnson (1985) Melody: *Christe sanctorum* (Antiphone, Paris, 1681)



1. Pledge we our loy-al-ty to As-sump-tion Col-lege
2. Our hearts will al-ways be with As-sump-tion Col-lege



Whose de-di-ca-tion in pur-suit of know-ledge
Her ban-ners wa-ving with out-stand-ing cou-rage



With-stands the test of time, aids us in our on-ward climb
Call for fi-de-li-ty and protect a spi-rit free



In search of truth and light.
Long live the blue and white!

*Written upon the occasion of the 80th Anniversary
of the founding of Assumption College.*



Order of Exercises

Eucharistic Celebration

MOST REVEREND TIMOTHY J. HARRINGTON, D.D., LL.D.
Bishop of Worcester

Academic Procession

Presiding

JOSEPH H. HAGAN, D.P.A., LL.D.
President

Invocation

REVEREND ROGER R. CORRIVEAU, A.A., M.DIV.
Dean of Campus Ministry

National Anthem

JOYCE E. CALLIGAN, '85
SHEILA M. WALDRON, '85
DONNA M. WILCOX, '85

Greetings

PRESIDENT HAGAN
VERY REVEREND RICHARD E. LAMOUREUX, A.A., PH.D.
Chairman, Board of Trustees
Provincial North American Assumptionists

Valedictory Address

SEAN J. SAVAGE, '85

Presentation of Candidates for Degrees

RICHARD A. OEHLING, PH.D.
Dean of Academic Affairs

JOHN E. BURKE, M.A.
Associate Dean of Academic Affairs

MARJORIE A. NICKEL, C.D.P., PH.D.
Associate Dean for Continuing and Professional Education and Graduate
Studies Continuing and Professional Education Degrees Graduate Degrees

Undergraduate Degrees

Presentation of Candidates for Honorary Degrees

JEAN WATSON	<i>Doctor of Humane Letters</i>
VIRGIL C. DECHANT	<i>Doctor of Humane Letters</i>
GEORGE KRIKORIAN	<i>Doctor of Humane Letters</i>
LUIS CARDINAL APONTE-MARTINEZ	<i>Doctor of Humane Letters</i>
WILLIAM J. BENNETT	<i>Doctor of Humane Letters</i>

Introduction of Commencement Speaker

JEFFREY P. UGALDE, '85 *Salutatorian*

Commencement Address

THE HONORABLE WILLIAM J. BENNETT
Secretary of Education of the United States

Assumption College Alma Mater -

ASSUMPTION COLLEGE CHORALE AND THE SYMPHONIC BRASS QUARTET -
Michelle Graveline, D.M.A. *Director*

Remarks and Benediction

BISHOP HARRINGTON

Recessional

Reception

ANDREW LASKA GYMNASIUM

Graduating Class of 1985

- Angela M. Adams, *Management*
 Michael K. Aijala,
Economics with Business Concentration, Cum Laude
 Cheryl A. Anderson, *Accounting*
 Joseph J. Arovas, *Accounting*
 Dwight B. Arvidson, *Biology*
 Christopher E. Ashe, *Psychology*
 Christie L. Aveyard, *Psychology/Social and Rehabilitation Services, Summa Cum Laude*
 Melissa M. Ballard, *Politics*
 Celia A. Barletta, *Foreign Languages*
 Mark W. Bartolomei, *Politics*
 Thomas V. Baxter, *Accounting*
 Pamela B. Bean, *Management, Magna Cum Laude*
 George A. Beaupre, Jr., *Management, Cum Laude*
 Margaret E. Bell, *Social and Rehabilitation Services,*
 Linda M. Belli, *Management*
 Robert A. Beltrandi, *History*
 Margaret A. Benison, *Management*
 Mary M. Bennett, *Psychology/Religious Studies,*
Magna Cum Laude
 Olympia C. Billis, *Psychology*
 Kenneth M. Black, *Psychology*
 Michael Blier, *Psychology*
 Diane L. Blonigen, *Accounting, Cum Laude*
 David J. Bonder, *Accounting*
 Marjorie L. Bouffard, *Accounting*
 Elizabeth A. Bourgeois, *Education/Psychology*
 Julianne M. Bowler, *Philosophy*
 Michael S. Boyer, *Psychology*
 Michael P. Boyle, *Management*
 Ann C. Brady, *Accounting, Cum Laude*
 James J. Brennan, *History*
 Barbara A. Brink, *Management*
 Elizabeth A. Briones, *Accounting*
 Lisa M. Brousseau, *Biology*
 Barbara A. Brown, *English*
 Maureen P. Brown, *Management*
 Andrea L. Brunault, *English/Politics, Cum Laude*
 Jayne E. Brush, *Management*
 Kevin R. Bugler, *Management*
 Christopher G. Burger, *Foreign Affairs*
 Stephen J. Byrnes, *Biology, Cum Laude*
 Vivian A. Caballero, *Chemistry*
 Kimberly A. Cabral, *Accounting, Cum Laude*
 Susan P. Cahill, *Management*
 Cynthia A. Carano, *Eaucation/English, Cum Laude*
 Daniel A. Cardinal, *History*
 Cynthia E. Carey, *Accounting*
 Alan P. Carlson, *Management, Cum Laude*
 Denise E. Carrier, *Biology*
 Kenneth J. Carrignant, *Sociology*
 Robert W. Carroll, *Social and Rehabilitation Services*
 James C. Carson, *Accounting*
 Brooks R. Carter, *Management*
 Margaret A. Casey, *Psychology*
 Suzanne D. Casey, *Psychology*
 James G. Cataldo, *Biology*
 Theresa J. Cataldo, *Psychology/Social and Rehabilitation Services*
 Albert P. Cavallo, *Accounting*
 Dianne M. Cavanaugh, *Psychology*
 Michael A. Chita, *Biology, Cum Laude*
 Robert E. Cloutier, *Management*
 Laurie J. Colbert, *Social and Rehabilitation Services*
 Michael K. Coleman, *Management*
 Joyce E. Colligan, *Social and Rehabilitation Services*
 Julie A. Connors, *Biology, Cum Laude*
 Catherine E. Conte, *Management*
 Neal M. Conway, *History, Magna Cum Laude*
 Heather L. Corley, *Management*
 Brian W. Costello, *Mathematics*
 Denise M. Costley, *Education/Psychology*
 David M. Cotillo, *Accounting*
 Sophocles C. Cotsis, *Psychology*
 Marie B. Creedon, *Psychology/Religious Studies*
 Sandra M. Creighton, *Psychology/Religious Studies,*
Cum Laude
 Nancy G. Culliford, *Management*
 Fernando J. da Silva, *Foreign Affairs*
 Melinda J. D'Arcy, *English*
 Dean J. Darr, *Biology*
 Larry J. Davenport, *Social and Rehabilitation Services*
 Richard J. DeCusati, *English*
 Doreen G. DeGray, *Psychology, Magna Cum Laude*
 Frank J. Dello Stritto, *History*
 Paul DelPizzo, *Management*
 Robert W. DeOrsay, *Management, Cum Laude*
 Karen A. DePalma, *Psychology*
 Nancy A. DePaolo, *Foreign Affairs*
 Denise A. Desautels, *Education/Social and Rehabilitation Services, Cum Laude*
 Susan Deveney, *Management*
 Jayne E. DiGeronimo, *Management*
 Jayne D. DiLiberato, *Management*
 Catherine M. Dillon, *Accounting*
 Catherine D. Dobrosky, *English*
 Cornelius P. Doherty, *Management*
 Christine M. Dolan, *English*
 Karen A. Doucette, *Social and Rehabilitation Services*
 Timothy P. Dowd, *Economics*
 William E. Doyle, *English/History*
 Cheryl A. Ducharme, *Religious Studies, Magna Cum Laude*
 Debra A. Duguay, *Management*
 Thomas J. Duke, *Management*
 Kathleen M. Eagan, *English*
 Patricia A. English, *Social aid Rehabilitation Services*
 Pamela A. Fallon, *Accounting, Cum Laude*
 Elizabeth E. Faron, *English*
 Eileen-Marie Flanagan, *English*
 Eric T. Fleming, *English*
 Patrick A. Folan, *Economics*
 James A. Fontaine, *History*
 John J. Fontaine, *Foreign Affairs*
 Joanne C. Foster, *Foreign Affairs*
 Roberta C. Freeman, *Accounting*
 Diane T. Frigon, *Social and Rehabilitation Services*
 William E. Fritz, *Management*
 Donna M. Gagnon, *Philosophy*
 Derek S. Garipey, *Accounting*
 Claudia T. Gil, *Biology*
 Ann M. Gillerlane, *Social and Rehabilitation Services,*
Cum Laude
 Christina M. Gillis, *Mathematics*
 Carole A. Girouard, *Psychology/Religious Studies,*
Summa Cum Laude
 Kathryn E. Gledhill, *Politics*
 Anne E. Gonsalves, *Foreign Affairs*
 Richard Greenhalgh, *Economics with Business Concentration*
 Sheila H. Greichen, *Economics with Business Concentration,*
Cum Laude
 Carl Gromala, *Management*
 April E. Gronberg, *Spanish, Cum Laude*
 Russell J. Guertin, *Economics with Business Concentration*
 Douglas J. Hagman, *Management*
 Margaret E. Hamilton, *Psychology, Cum Laude*
 Margaret F. Handlin, *Psychology, Cum Laude*
 Leslie L. Hannigan, *Biology*
 Sharon L. Hannigan, *Psychology*
 James L. Hayes, *Accounting*
 Julie Hayes, *Management*
 William G. Hayward, *Biology, Magna Cum Laude*

Kimberly A. Hazard, *Foreign Affairs/French, Cum Laude*
 James A. Heffernan, *Mathematics, Magna Cum Laude*
 Elizabeth A. Henault, *Social and Rehabilitation Services*
 Mary B. Hennessy, *Sociology*
 Eileen M. Higgins, *Accounting*
 Maureen E. Higgins, *Educational/Social and Rehabilitation Services*
 Thaddeus A. Hollis, *Foreign Affairs/History*
 Patricia A. Horan, *Social and Rehabilitation Services, Magna Cum Laude*
 Harold L. Hough III, *Accounting*
 Dennis P. House, *Foreign Affairs*
 Mary-Katherine Hughes, *Psychology, Magna Cum Laude*
 Kathleen M. Hussey, *English*
 Elizabeth A. Iandoli, *Social and Rehabilitation Services*
 Ana T. Irizarry, *Psychology, Cum Laude*
 Carolyn A. Jaeger, *Natural Sciences*
 Michele L. Johnson, *English*
 Pamela A. Johnson, *Management*
 Thomas J. Kane, Jr., *Management*
 Rosemary A. Karl, *Social and Rehabilitation Services*
 Martin R. Karlon, Jr., *Communications/English, Cum Laude*
 Joy S. Kaufman, *Psychology/Social Rehabilitation, Cum Laude*
 Anne E. Kearney, *Management*
 John J. Keenan, *Accounting*
 Patrick E. Kellard, *Management*
 Margaret E. Kennedy, *Economics with Business Concentration*
 Sharon E. Kenny, *Social Rehabilitation*
 Lisa D. Kerkorian, *English*
 Mark J. Kiely, *English*
 Caroline Killeen, *English*
 J. Peter Kinney, *Management*
 Robert D. Knittle, *Mathematics*
 Carol A. Krupa, *Accounting*
 Beverly A. Kubacki, *English/Spanish*
 Christos A. Kyriakis, *Accounting*
 Arthur R. Lambert, *History/Politics, Cum Laude*
 Laurie A. Lambert, *Education/Psychology*
 Lynne A. Langway, *Social and Rehabilitation Services*
 Elizabeth K. Lapman, *Spanish, Magna Cum Laude*
 Leslie A. Laquerre, *Psychology*
 Catherine J. Latham, *Social and Rehabilitation Services, Cum Laude*
 Amy D. Latour, *Mathematics, Cum Laude*
 Lisa C. Laverdure, *Psychology/Religious Studies, Cum Laude*
 Janet P. Leary, *Spanish*
 Gladys J. Leavitt, *Psychology, Summa Cum Laude*
 Jane E. LeBlanc, *Politics*
 Nancy E. Legere, *Foreign Affairs*
 John J. Lepore, Jr., *Fine Arts-Art History/English*
 Harold M. Lewis, *Management*
 Andrew A. Lipka, *Management*
 Laura A. Loffredo, *Social and Rehabilitation Services*
 Andrew J. Maggio, *Psychology*
 Tracie P. Manna, *English*
 Donna L. Manning, *Management*
 Anthony M. Marano, *Psychology*
 Nancy J. Marley, *Social and Rehabilitation Services, Cum Laude*
 Susan J. Marotta, *Economics with Business Concentration, Cum Laude*
 Marie Therese Martin, *Accounting*
 Roger L. Martin, *Mathematics, Magna Cum Laude*
 Cynthia S. Mattus, *Psychology*
 Helen E. McAuliffe, *Social and Rehabilitation Services, Magna Cum Laude*
 Martha M. McCabe, *Sociology*
 Margaret M. McCarthy, *Social and Rehabilitation Services*
 Carol A. McDonald, *Social and Rehabilitation Services, Cum Laude*
 Julie A. McElroy, *Economics with Business Concentration*
 Steven F. McGuigan, *Religious Studies, Cum Laude*
 Diane M. McGuire, *Fine Arts-Studio Art, Cum Laude*
 Donna M. McGuire, *Chemistry*
 Brian P. McGurn, *English*
 Diane M. McParland, *Social and Rehabilitation Services*
 Patricia A. Meciak, *Biology*
 Robin L. Mendez, *Politics*
 James V. Mezynski, *Biology/Philosophy, Summa Cum Laude*
 Eric J. Miller, *Social and Rehabilitation Services*
 John J. Miller, *Management*
 James S. Misenti, *History/Sociology*
 Daniel A. Misiorek, *Management*
 Margaret E. Mitchell, *Biology*
 Irene I. Molinari, *Ancient and Medieval Studies*
 Richard J. Monroe, *Philosophy, Cum Laude*
 Dianne D. Morell, *Accounting, Magna Cum Laude*
 Susan E. Morgan, *Social and Rehabilitation Services/Education*
 David R. Morisseau, *Chemistry, Magna Cum Laude*
 Robert D. Morton, *Economics with Business Concentration*
 Pegeen M. Muldoon, *Management*
 Jeffrey M. Mullaney, *Management*
 Robert S. Mullaney, *History, Magna Cum Laude*
 Daniel B. Murphy, *Management*
 Jill V. Murphy, *Management*
 Kerin M. Murphy, *Social and Rehabilitation Services*
 Steven J. Musser, *Politics*
 Ellen A. Nalivaika, *Biology, Cum Laude*
 Renée D. Nardi, *Management*
 John A. Neagle, *Management*
 Edward A. Niedbala, *Philosophy*
 Kevin G. Nolan, *Management*
 Steven J. Obartuck, *Accounting*
 Kathleen M. O'Connor, *Social and Rehabilitation Services*
 Kathryn M. O'Leary, *Psychology*
 Erika L. Olson, *Accounting*
 William L. Olson, *Biology*
 Timothy P. O'Neil, *English*
 Patricia L. O'Reilly, *Accounting*
 Linda T. Pacella, *Accounting*
 William E. Palli, *History/Politics*
 Christopher C. Paquette, *Mathematics*
 Margaret A. Paradise, *Foreign Affairs*
 Elizabeth M. Parella, *English/Management, Cum Laude*
 Peter Parente, *Biology*
 Leslie J. Parker, *Management/Spanish*
 David L. Parlante, *Management*
 Christopher S. Paskalis, *Management*
 Diane M. Paton, *Biology, Cum Laude*
 Denise P. Pelletier, *English, Magna Cum Laude*
 Robert P. Pepi, *Politics*
 Kathleen H. Phoenix, *Psychology*
 Joyce M. Pinney, *Economics*
 Joanne Pinsonneault, *Sociology, Summa Cum Laude*
 Lisa M. Piquette, *English, Magna Cum Laude*
 Arthur F. Plante, *Management*
 Kerry L. Plunkett, *Education/Social and Rehabilitation Services, Magna Cum Laude*
 Brenda A. Podsy-Tetreault, *Social and Rehabilitation Services*
 Holly M. Polglase, *English, Cum Laude*
 Beth-Ann Porter, *Social and Rehabilitation Services*
 Catherine T. Porter, *Sociology*
 Brian J. Postale, *Chemistry*
 Mary S. Powers, *Accounting*
 Brooke N. Preiss, *Psychology*
 Andrea J. Pulcini, *Foreign Affairs/Spanish*
 Bruce F. Quigley, *Management*
 Francis X. Reagan, *English/Religious Studies*
 Kathleen T. Reed, *Social and Rehabilitation Services*
 Elizabeth E. Reid, *Accounting, Cum Laude*
 Patricia A. Reilly, *Management*
 Kevin F. Remillard, *Biology*
 Edward J. Richer, *Mathematics*
 Susan J. Risedorf, *Religious Studies/Sociology, Magna Cum Laude*

Laura J. Robichaud, *Social and Rehabilitation Services*
 Susan A. Rosbury, *History/Politics*
 Sharon A. Rothwell, *Accounting*
 Pamela L. Roy, *English*
 Anthony D. Rozevicius, *Accounting, Magna Cum Laude*
 Helen R. Russell, *Communications/English*
 John A. Ryan, *Management*
 Janice M. St. Pierre, *Management*
 Donna E. Salone, *Psychology*
 James P. Sauger, *Chemistry*
 Sean J. Savage, *History/Politics, Summa Cum Laude*
 AnnMarie Schiavitti, *Economics with Business Concentration/
 Foreign Affairs, Cum Laude*
 David S. Scougall, *Chemistry*
 Kathleen A. Shanahan, *Economics with Business Concentration,
 Cum Laude*
 Mark E. Sharkey, *Biology, Magna Cum Laude*
 Paul M. Shuley, *Management*
 Tierza A. Sloane, *Management*
 Martin A. Slone, *Accounting*
 William P. Smith, *Management, Magna Cum Laude*
 William X. Sousa, *Philosophy/Politics, Cum Laude*
 Wayne A. Spiro, *Management, Cum Laude*
 Tracy S. Starbard, *Chemistry, Cum Laude*
 Kelly M. Stenquist, *Politics*
 Brian P. Sullivan, *History*
 Mary K. Sullivan, *English/History*
 Susan M. Taddeo, *Accounting*
 Richard S. Taylor, *Management*
 Jennifer L. Thibeault, *Biology*
 Stephanie M. Tirella, *Social and Rehabilitation Services*
 Timothy J. Tobin, *Biology*

Rose, Charles P. English

Roselly Torres, *Management*
 Steven M. Tougas, *Biology*
 Lise A. Tousignant, *Social and Rehabilitation Services,
 Magna Cum Laude*
 Susan M. Turcotte, *English*
 Christopher J. Turner, *English*
 Jeffrey P. Ulgade, *Accounting, Summa Cum Laude*
 Laurel A. Uminski, *Psychology*
 Alyson J. Valentine, *Psychology*
 Robert M. Valentine, *Accounting*
 Louise D. Valiquette, *Psychology/Social and Rehab Services, Magna
 Cum LAUDE*
 Maureen E. van Hogezaand, *Foreign Languages, Cum Laude*
 Rita A. Vanderbeck, *Social and Rehabilitation Services*
 Luanne Vardo, *Politics*
 Michael Varley, *Biology, Cum Laude*
 Pamela E. Vasil, *Management*
 Martha A. Vaskas, *Sociology*
 Glenn R. Verdini, *Accounting, Magna Cum Laude*
 Steven B. Vitale, *Psychology, Magna Cum Laude*
 Philip J. Vitali, *Accounting*
 Christine M. Waitkus, *Biology*
 Sheila M. Waldron, *Sociology*
 Marie B. Watrous, *Social and Rehabilitation Services,
 Cum Laude*
 Donna M. Wilcox, *Accounting*
 Gail S. Withrow, *Management, Cum Laude*
 Andrew P. Wood, *Management*
 Mary P. Wood, *Psychology*
 Maria Zanghetti, *Management*
 Wesley J. Zelif, *Economics with Business Concentration/
 Foreign Affairs*
 Paul M. Zopatti, *English, Magna Cum Laude*

Center for Continuing and Professional Education

ASSOCIATE OF LIBERAL STUDIES

Dorothea E. Blackwood, *Cum Laude*
 Carol A. Hilton, *Cum Laude*

Susan N. LaFerriere
 Janis C. L. MacQuestion, *Magna Cum Laude*

BACHELOR OF BUSINESS ADMINISTRATION

Jeanne M. Alexandrowicz, *Management*
 Eugene A. Belanger, *Accounting*
 Nancy H. Berggren, *Accounting*
 Karen E. Chrobak, *Accounting, Cum Laude*
 Jean W. Dawson, *Accounting, Magna Cum Laude*
 Mary Dussault, *Accounting, Cum Laude*
 Mary B. Foley, *Management*

Robert L. Ghiz, *Accounting*
 Elizabeth A. Kolak, *Accounting, Summa Cum Laude*
 Roger H. LaCroix, *Management*
 Grace C. Largess, *Accounting, Cum Laude*
 Lynn C. Paresky, *Management, Summa Cum Laude*
 Helen M. Szabo, *Management, Cum Laude*
 Robert E. Tivnan, *Management*

Pauline M. Muruguru, Mgt.

BACHELOR OF LIBERAL STUDIES

Janice A. Hughes

Teresa A. Wheeler, *Summa Cum Laude*

BACHELOR OF SCIENCE IN LIBERAL STUDIES

Susan M. Anderson, *Magna Cum Laude*
 Mary Jane Bade
 Judith A. DeFalco, *Cum Laude*
 Cynthia A. Ethier
 Helene Halasz
 Lynn M. Halldin, *Cum Laude*
 Jane P. Hildreth
 Kathleen T. Hoey

Sue M. Lovely, *Cum Laude*
 Joyce B. McGourty
 Carla B. Meehan, *Magna Cum Laude*
 Veronica M. Muruguru
 Margaret R. Page, *Cum Laude*
 Nancy K. Sarlan, *Magna Cum Laude*
 Frances S. Southard, *Magna Cum Laude*
 Phyllis A. Taxiera

Janice M. Wilcox, *Cum Laude*

BACHELOR OF SCIENCE IN NURSING

Norma L. Baer
Elizabeth R. Bird, *Cum Laude*
Cynthia A. Brodeur
Carolyn A. Brunell
Marian W. Cutroni, *Magna Cum Laude*
Elizabeth A. D'Alesio
Suzanne M. Dwinell
Rosemary E. Elia
Martha A. Forsher, *Cum Laude*
Catherine C. Grimes

Carol A. Haran
Jane A. Hill
Paula A. Hutchinson
Nancy B. Jarvais
Gail F. Landers, *Cum Laude*
Judith A. LeFave
Kathleen M. Merrill
Diane A. Mullen
Patricia M. Santoro
Cynthia A. Viens

Conferring of the Master of Business Administration M.B.A.

Master of Arts M.A.

Master of Arts in Teaching M.A.T.

and Certificate of Advanced Graduate Studies C.A.G.S. Degrees

BUSINESS ADMINISTRATION
M.B.A.

Robert F. DesRosiers
Paul H. Favulli
Michael P. McEvilly

Geetha Renganathan
Albert J. Scaramella
David I. Walsh

Bruce J. Wetherbee

COUNSELING PSYCHOLOGY
M.A.

Daphne F. Abodeely
Charlene M. Allen
Debra S. Bolz
Cynthia Clifford
Mary A. Cronin
Margaret H. Donnelly
Donna M. Filosa
Terrence J. Fontaine
Lisa L. Frechette-Nowlin
Margaret E. Green-Kohn
Jane M. Guevremont
Kathryn L. Hitchings
Timothy J. Kelley
Joan W. Krieger
Robyn M. LaBerge
Norman L. Larochelle

Anthony M. Mendonsa
Clifford C. Muldoon
Colleen F. Murphy
Carmen E. Navia
Margaret M. O'Brien
Nancy B. Ohan
~~Karen M. O'Malley~~
Alireza Partovi
Sandra E. Pierce
Katheryn L. Poulin
Gilda S. Press
Lucy J. Sheerin
Linda R. Sullivan
Glenn R. Wile
James J. Winters-Corcoran
Edward E. Wolf

EDUCATION
M.A.

John L. Bresciani

Judith A. Rutelonis

James R. MacKirdy

ENGLISH
M.A.

Brian P. Bercier

Christine J. White Thorn

Timothy J. Connolly

FINE ARTS
M.A.T.

Salvatore Fazio

FRENCH
M.A.

Gena A. Barbieri

HISTORY
M.A.

Frank G. Charbonneau

REHABILITATION COUNSELING

Agustin E. Affant, M.A., C.A.G.S.
Carol A. Boushell, M.A.
Colleen C. Considine, M.A.
Janet G. Couture, M.A., C.A.G.S.
Sue A. Cundall, M.A., C.A.G.S.
Edward J. Doherty, M.A.
Linda E. Doherty, M.A.
John A. Farrington, C.A.G.S.
Thomas A. Finn, M.A., C.A.G.S.
Deborah A. Gilbert, M.A.
Sandra T. Green, M.A.
Janice A. Guenette, M.A.
Mary E. Hadley, M.A.
Joseph J. Krajewski, M.A., C.A.G.S.
Joyce A. LeClair, M.A.

Judith A. Leesha, M.A., C.A.G.S.
Betty J. Lynch, M.A.
Kevin F. Manning, M.A.
Robert K. Marchand, M.A.
Gail P. McDermott, M.A.
Pamela C. Millar, M.A.
James P. Moriarty, M.A.
Ellen J. Moynihan, M.A., C.A.G.S.
Mary S. Shaw, M.A.
Carol A. Rogers, M.A.
Patricia A. Ryan, M.A.
Mary C. Soule, M.A.
Karen J. Sutherland, M.A.
Louise A. Sutherland, M.A., C.A.G.S.
Dolores Toomey, M.A.

RELIGIOUS STUDIES
M.A.

Alan F. Hoffsommer
Barbara J. Moore

Sandra J. Neergaard
Jeffrey W. Talley

RELIGIOUS STUDIES
C.A.G.S.

Conrad S. Pecevich

SPECIAL EDUCATION
M.A.

Kim E. Campbell

Sandra E. Nelson

Kim A. Flannery

This is not an official document of Assumption College.