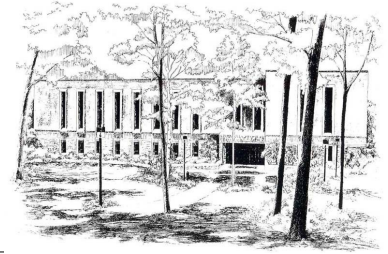


Emmanuel d'Alzon Library Link



Volume 13, Issue 1

Winter 2009

From the Director's Desk

A number of our Assumption faculty serve (or will serve) as editors of scholarly journals. They do this in service to their professional organizations and as a way to add scholarly achievements to their résumés as they work toward tenure or promotion. As always, the Library supports and congratulates these professors on these activities and would like to know more about them.

One professor, Dimitrius Kantarelis, editor of *Global Business & Economics Review*, has made it a practice to negotiate with his journal publishers to get free subscriptions to the journals he edits for our library. We would like to thank him for thinking of the d'Alzon Library and adding to our collection in a way that is a "win-win"



Dr. Dawn Thistle
Director of Library Services/
Interim Director IT

for everyone involved. If any other professors are considering taking on editorial responsibilities, please consider asking your publisher or professional organization to do the same. As we face a probable reduction in our materials budget, such an arrangement can help us to continue to provide information resources for our students.

Inside this issue:

From the Director's Desk	1
D'alzon Enhances Printing	2
Fasten Your Seatbelts— Shifting!	2
Databases	3
New Staff Update	3
Faculty Publishing	4
Missing Library Items	5
Library Infomercial	5
D'Alzon Arts Series	6
Copy-Center Pricing	6
Staff Field Trip	7
Fr. Tavard Event	7
From the Back Cover-New Books	8

Trialtime— an original comic pt.4



D'Alzon Library Enhances Printing

Laurie Welling
Systems Librarian

The Library recently replaced the increasingly unreliable public access printer with two new printers and added a second GoPrint release station. Students working at the computers by the bank of windows facing the front lawn will now have their own separate printer and GoPrint release station. This will help eliminate long lines at the printers during busy times.

A note on the GoPrint system: not only does this system allow users to delete unwanted print jobs, thus saving paper, it allows users to release print jobs only when they are ready, thereby preventing individual print jobs from getting lost in a large pile of other print jobs.

The Library welcomes suggestions on how to further improve

its printing service further. Please send suggestions to Laurie Welling at lwelling@assumption.edu.



Fasten Your Seatbelts—It's Time to Shift!

Mary Brunelle
Cataloger/Reference Librarian

Winter break can be a time to slow down and enjoy the holiday festivities. For librarians, it is a time to take advantage of the slower pace by tackling a large project that is otherwise difficult to accomplish during the academic year. This year's project was a reconfiguration of the Reference, Media, and Index shelves to provide more room for growth in the Reference collection.

Due to the rapidly growing literature section, librarians recognized the critical need for additional space in the Reference stacks. To acquire this space, the library staff devised a plan that would allow for growth in the Reference collection by extending the collection into the shelves that previously housed Media. Where, then, would Media go? To the Index shelves, of course! As librarians, we love the old tried and true print indexes, but we admit they are used rather infrequently. Although we chose to keep several indexes that still get occasional use, including *Readers' Guide to Peri-*

odical Literature and *Sociological Abstracts*, we discarded such seldom-used sets as *Book Review Index* and *Biography Index*.

Library staff also chose to discard many sets of legal materials, including *Annotated Laws of Massachusetts*, *American Jurisprudence*, and *United States Supreme Court Reports*. Like the print indexes, these sets are rarely used, and the full text is both browsable and searchable on-line via LexisNexis.

Finally, we took a close look at the large sets of literary criticism sources in the Reference collection. Because Gale/Cengage Learning, the publisher of such titles as *Drama Criticism*, *Poetry Criticism*, *Contemporary Literary Criticism*, and *Short Story Criticism*, offers reasonably-priced electronic versions of the print sets, we chose to purchase on-line subscriptions for future volumes. These sets, then, will remain a combination of print and electronic material.

With all the free space from the discards in the Index and Reference collections, library staff shifted into gear (as Larry would say!) and set about the task of shifting all three collections. We consolidated the indexes down to one aisle, shifted the media (videos and DVD's) to two aisles that face each other, and snaked the end of the Reference collection to the previous home for the media. In fact, we shifted the entire Reference collection to balance the space and remove all books from top shelves, providing easy access for patrons.

All this shifting was hard work, and we nearly wore paths in the carpet with all the trudging back and forth. It was a bit difficult to let go of such respected sources as *Biography Index* and *United States Supreme Court Reports*, sets that have been staples in libraries for decades. However, we envision that the newfound space will allow for fun and exciting titles to come in the future.

Library Adds New Databases

Carole Myles

Head of Reference and Instructional Services

The d'Alzon Library has added three databases to its ever-growing list of online resources. They are *GreenFILE* from EBSCO, *Literature Criticism Online* from Thomson Gale, and three online journals from the Biblical Archaeology Society.

GreenFILE offers information covering all aspects of human impact on the environment. Its collection of scholarly, government and general-interest titles includes content on global warming, green building, pollution, sustainable agriculture, renewable energy, recycling, and more.

Literature Criticism Online

represents views on authors and their works across regions, eras and genres. The scholarly and popular commentary were derived from broadsheets, pamphlets, encyclopedias, books and periodicals, all delivered in a format that matches the exact look and feel of the print. Online access begins with content from July 1, 2008. Commentaries prior to this date are still available in print at the library.

The Biblical Archaeology Society offers online access to three scholarly journals, *Biblical Archaeology Review*, *Bible Review*, and *Archaeology Odyssey*. Well-known for their

current coverage in Biblical research, *Bible Review* and *Archaeology Odyssey* ended publication in the last few years, both being superseded by *Biblical Archaeology Review*. Online access to these superseded titles is one of the few ways to still access the content.

Access to these databases can be found on the Library's Web site under: Research Tools>Databases>Databases A-Z

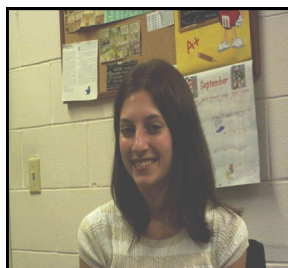
New Interlibrary Loan/Circulation Assistant

Janice Wilbur

Assoc. Library Director/Head of Access Services

Ashley Malouin had recently graduated as an English Major from Fitchburg State College, when she saw the position of ILL/Circulation Assistant at Assumption College through the Mass Board of Library Commissioners Website. She worked as an assistant in ILL and circulation at Fitchburg Public Library throughout her years in school, so the full-time position at Assumption appealed to her. Her background and experience appealed to us, so beginning last October she assumed the duties of Interli-

brary Loan in the d'Alzon Library. Her position includes assisting with Public Access and the duties of Interlibrary Loan



that were done by Larry Sponberg prior to his retirement.

On a personal note, Ashley moved to Rutland from Fitchburg after starting her position at the college and is starting her studies for a Masters degree in Library Science online through Drexel University. She enjoys reading and running in good weather.

So, if you need a book or article from a magazine not available in the library, introduce yourself to Ashley at the Circulation/Reserves area. She works during the day and is eager to help!

Emmanuel d'Alzon Library Celebrates the Writer

Mary Brunelle

Cataloger/Reference Librarian

Believe it or not, professors do more than grade papers every day. In addition to managing their busy class schedules, professors somehow find the time to research their own interests and publish their findings. As we learned at the Library's annual Faculty Publication Reception on November 5, Assumption professors have been busier than ever. A total of 50 faculty members published 101 original pieces, including books, journal articles, essays, prayers, and poems.

This record number of publications represents the largest body of published work since the Library began honoring faculty achievements five years ago. Although the number of publications increases every year, this year's increase was especially significant—22% from the previous year.

Even more interesting than the

numbers of publications is the content of these works. Faculty members from many departments across campus published material on a wide range of topics—from examining a Latin homily on Ecclesiasticus to observing the behavior of paramyxoviruses, and from analyzing the literature of Ecuadorian author Juan León Mera to studying separation anxiety and panic disorders in young people. Professors who attended the Faculty Publication Reception were invited to speak for a short time about their work, and guests were delighted to learn a bit about their colleagues' creative endeavors.

Guests also enjoyed reviewing copies of the faculty publications, which were on display in the Reference room of the library. The Library staff collects as many copies of the professors' works as possible and makes them avail-

able to the public. Books are cataloged for the Circulating collection. Patrons may search for titles in the library catalog, by executing either an author search for a professor's name or a subject search for "Assumption authors Faculty" on the advanced search screen. Copies of journal articles and essays are kept behind the Circulation desk.

You can view the full list of all faculty publications—past and present—on the Library's Web site at <http://www.assumption.edu/dept/library/faculty/facpubs.html>. Congratulations to all the professors who published this year. We always enjoy celebrating the accomplishments of our very talented faculty!



d'Alzon by the Numbers

by Liz Maisey

9 avid

RED SOX
fans on the
Library staff

1082

Books Ordered for
the Library in 2008

242,576

pages printed
in the Library
for the
2008 Fall Semester

665 years

combined age of
all Library staff
members

1, 319, 326

people to walk
through the Library's
front door since 1989.

144

steps in
the library

Have you seen us? Missing Videos/DVD's

Janice Wilbur

Assoc. Library Director/Head of Access Services

Here are some of our missing titles for video and DVD. If you find them in your pile of "things to watch," please return them to us as soon as you can...Thanks!

Going Places

Dance Class for the Actor

Scribes, Scholars and Saints Siegfried

Psycho

American Beauty

Patton

Requiem for a Dream

Hotel Rwanda

About Schmidt

Lamerica

Soliti Ignoti

No Country for Old Men

Mind of a Killer

Behavioral Treatment of Autistic Children

Counseling and Therapy with

Native American Indians

Power of Dreams

Cognitive Therapy for Panic

Disorders

Developing Child

On the Spectrum

Super Size Me

Letters From the Other Side



Super Size Me
Google Images

D'Alzon Chronicles Now Available

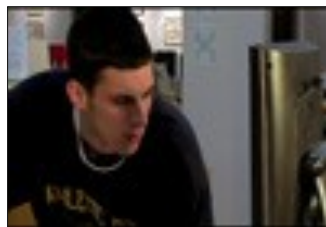
Carole Myles

Head of Reference & Instructional Services

D'Alzon Chronicles's worldwide release took place this past October. A series of three library "instructomercials" (instructional commercials), they were produced jointly by student directors and Library staff. The year-long project was a collaborative project that also included a musical score created by faculty and students from Berklee College of Music.

Loosely based on Charles Dickens's, *The Christmas Carol*, the first instructo-mercial features student actor, Mike Lepore, and "Larry the Librarian." The segment focuses on Mike, a procrastinating college student who begins work on his research paper late at night. When Mike falls asleep at his desk, he dreams Larry brings him to the Library and teaches him how to use the online catalog for finding books.

In the second segment, Mike continues his research lesson with "Carole the Princess Librarian,"



who teaches him how to find scholarly articles from an online database. At the end of this segment, Mike is pleased that he has all this information for his paper. However, he contemplates plagiarizing a paragraph from an article that's perfect for his paper, and he believes no one will notice. The third segment shows Mike how bleak his future will be if he plagiarizes.

Filming for this series was made possible by a \$5000 grant, awarded by the Institute of Museum and Library Services through the Library Services and Technology Act (LSTA) and administered by the Massachusetts Board of Library Commissioners.

The project was undertaken in 2007-2008 as an independent study in advanced television production by several students, overseen by John Hoover, an adjunct professor in the Theater and Television Arts Department, all in conjunction with Library staff. The most experienced students acted as directors/producers while the newer students filled in as crew. Students were involved in every step of the project, from scripting and acting to filming and editing.

The videos can be viewed on the Library's Web site (<http://www.assumption.edu/dept/library/resources/instructo.htm>). The page includes extra features such as Bloopers, Behind the Scenes, and a documentary on Larry the Librarian's retirement. You can also find the videos on YouTube by doing a search with **d'alzon**.

d'Alzon Arts

Paintings in Transition, our current exhibit in the d'Alzon Arts Series, features works by Tom Grady, visiting assistant professor of studio art here at Assumption College. This captivating show is on display in the library through February 27. The opening reception took place on Tuesday, January 20, at 4:30 p.m. and included an intriguing statement by the artist.

Mark your calendars for future d'Alzon Arts events, including the first scheduled 2009 poetry read-

ing on Friday, February 20, featuring readers Gertrude Halstead and Anne Marie Lucci, along with an open mic. The next art show, *The Water Series* by artist Sara Frankel, will run from March 2 – April 17, with an opening reception on Tuesday, March 3, at 4:30 p.m. Please join us!

For more information on the d'Alzon Arts Series, visit our Web site

<http://www.assumption.edu/dept/library/events/dalzonartssched.html>



"Renewal" by Tom Grady

❄️	❄️	❄️	❄️	❄️	❄️	❄️	❄️
❄️	<u>Winter Hours</u>						❄️
❄️	Sunday						❄️
❄️	11 a.m.– 1 a.m.						❄️
❄️	Monday– Thursday						❄️
❄️	8 a.m.– 1 a.m.						❄️
❄️	Friday						❄️
❄️	8 a.m.– 6 p.m.						❄️
❄️	Saturday						❄️
❄️	10 a.m.– 8 p.m.						❄️
❄️	❄️	❄️	❄️	❄️	❄️	❄️	❄️

Copy Center Prices

The Copy Center provides services that are not available from the Library:

<input type="checkbox"/>	Resume Paper copies	.15
<input checked="" type="checkbox"/>	Resume copies on your own paper	.03
<input type="checkbox"/>	Black & White copies	.04
<input checked="" type="checkbox"/>	B&W copies on color paper	.05
<input checked="" type="checkbox"/>	Color Copies	.75
	Local Faxes (508) 1st page	2.00
<input checked="" type="checkbox"/>	Local Faxes (508) Add'l pages	.50ea
	Out of area code fax	3.00
	Out of area code fax Add'l pgs.	.50ea
	Poster–red, black, blue print	2.50ea.
<input checked="" type="checkbox"/>	Poster– multi-colored(pdf, or ppt only)	5.00sqft

Savings to

you...

★ ★ ★ ★ ★ ★ ★ ★ ★ ★
★
★ PRICELESS! ★
★ ★ ★ ★ ★ ★ ★ ★ ★ ★

Staff Visit to the National Heritage Museum & Library in Lexington

Phil Waterman

Reference/Instructional Services
Librarian

Each winter break, the staff at d'Alzon Library plans a day-long field trip to an area library to get a glimpse of how other libraries are run. This year, the destination was the Van Gorden-Williams Library at the National Heritage Museum in Lexington. The National Heritage Museum is an American history and popular culture museum that offers free admission to all. Its Library contains over 50,000 books and periodicals on American history and the history of Freemasonry in the United States.

In addition to visiting the Library, the d'Alzon staff explored



Library Staff enjoyed a trip to Lexington, MA, over Winter Break!

the Museum's current exhibits, including Art and Folk Heritage in Massachusetts, Ellis Island Portraits: 1905-1920, Illustrated

American Sheet Music: 1917-1924, and Sowing the Seeds of Liberty: Lexington and the American Revolution.

Fr. Tavad Event

Barrie Mooney

Reference/Instructional Services
Librarian

Fr. George H. Tavad was a member of the Augustinians of the Assumption, the religious order that founded Assumption College. He was ordained in France in 1947 and earned a doctorate of sacred theology from Lyons in 1949. In addition to his priestly duties, Fr. Tavad worked as a teacher, editor and theologian throughout his life, holding faculty posts at Assumption, Mt. Mercy College (Carlow University today), and Methodist Theological School, as well as serving as visiting professor at several institutions. He attended Vatican Council II as a "peritus conciliaris" named by Pope John XXIII, and was a consultant to the Pontifical Secretariat for the Unity of Christians.

Fr. Tavad was a prolific writer with more than 50 books and several articles to his credit. His library and his writings clearly reflect his interests in theology, the history of religion and ecumenism. Specific topics of research include Protestantism, the Reformation, ecumenism, medieval philosophy, the Catholic Church, Church renewal, women in the Church, Maryology, mysticism, and more.

In addition to donating his books to the d'Alzon Library, Fr. Tavad donated his archives to Marquette University, Milwaukee, WI.

We had a wonderful celebration in honor of his donation to the

Assumption College Library on Wednesday, January 21, 2009 at 3:30 in the library. There was a short welcome from our President Dr. Cesareo, Interim Provost Dr. Travis, and the Director of Library Services Dr. Dawn Thistle. Father Dennis Gallagher, vice-president for mission, gave an introduction and the keynote address was given by the Rev. Edward M. O'Flaherty, director of the office for Ecumenical and Interreligious Affairs of the Boston Archdiocese. Our Catalog Librarian, Liz Maisey concluded with an overview for finding more information on Fr. Tavad's diverse library collection as well as finding his own work.

We're on the web!

<http://www.assumption.edu/dept/library/resources/libinformation.html#newsletters>



Emmanuel d'Alzon
Library
Assumption College
500 Salisbury Street
Worcester, MA 01609-1296



From the Back Cover: Newly Acquired Books

Liz Maisey
Senior Catalog/Reference
Librarian

Slavery in the Age of Reason: Archaeology at a New England Farm by Alexandra A. Chan

"Offering a rare look into the lives of enslaved peoples and slave masters in early New England, *Slavery in the Age of Reason* analyzes the results of extensive archaeological excavations at the Isaac Royall House and Slave Quarters, a National Historic Landmark and museum in Medford, Massachusetts." - Book jacket.

Movies and the Modern Psyche by Sharon Packer

"Psychology and cinema are kindred cousins, born at the same time and developing together, so that each influences the other. [...]By looking at the interactions between cinema and psychology, this book offers readers clear and basic insights into some of the most fundamental reasons why film is such an important influence upon our lives today." - Book jacket.

Apocalypse: a Catholic Perspective on the Book of Revelation by Stephen C. Doyle, O.F.M.

"In this engaging and responsible volume, Scripture scholar Stephen Doyle uses a three-pronged approach to deciphering the complicated and often-misunderstood Book of Revelation – one that is accessible to a new Bible reader, yet useful to the serious student." - Book jacket.

Hooking Up: Sex, Dating, and Relationships on Campus by Kathleen A. Bogle

"Breaking through many misconceptions about casual sex on college campuses, *Hooking Up* is the first book to understand the new sexual culture on its own terms, with vivid real-life stories of young men and women as they navigate the newest sexual revolution." - Book jacket

Leprosy in Medieval England by Carole Rawcliffe

"Set firmly in the medical, religious and cultural milieu of the European middle ages, this book is the first serious academic study of a disease surrounded by misconceptions and prejudices." - Book jacket.

